

ALPHAÆON®

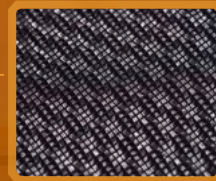
ALPHAÆON e3

Ergonomic Chair

Meet the perfect ergonomic style



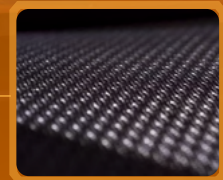
ULTRA WIDE ANGLED
HEADREST, 2D NECK
ADJUSTMENT



HYBRID SURFACE
REINFORCED DuPont™
TPEE MESH



2D ADJUSTABLE
LUMBAR SUPPORT,
21° RECLINE TILT



ANTI-RIP/TEAR BIFMA
CERTIFIED 120,000
CYCLES



4D ADJUSTABLE
ARMREST



AIR BASE SLIDE
ADJUSTMENT



TÜV CERTIFIED
CLASS4 GAS LIFT



HOLO WHEELS, SOFT,
QUIET & DURABLE



LIGHT WEIGHT &
ANTI-CORROSIVE
ALLOY WHEELBASE



START with COMFORT

Dimensions



Specifications

Model Name	E3
Chair Type	Ergonomic chair
Chair/Seat Back Style	High-back
Mesh	Reinforced DuPont™ TPEE MESH
Color	Black / Gold
Adjustable Armrests	4D
Mechanism Type	Multi-functional
Adjustable Tilt Angle	21 degree
Tilt Lock	Yes
Leaning Angle	4 levels
Gas Lift Class	TÜV Class 4
Lift Distance	8.5 cm

Seat Size	49 x 52 cm
Seat Depth Adjustment	5 cm adjustable
Adjustable Lumbar	2D adjustable
Adjustable Headrest	Hybrid (PU+Reinforced DuPont™ TPEE MESH)
Base Type	700mm size aluminum
Caster Size & Material	65mm Hollow wheels
Package Size	87 × 67 × 37 cm
Container Loading	20'GP: 126 / 40'GP: 270 / 40'HQ: 308
Net Weight (Approximate)	21.2 kg
Gross Weight (Approximate)	25.7 kg
Weight Capacity	136 kg
Certifications	All parts are BIFMA certified

Product name	EAN	Model NO
Alphaeon E3 Ergonomic Chair (DuPont™TPEE MESH) - Black	0 732330 417110	AE-E3-BK
Alphaeon E3 Ergonomic Chair (DuPont™TPEE MESH) -Gold	4 711409 580289	AE-E3-GD